

# MEITRACK Magnetic Card Reader User Guide



**Applicable Model: T633L**

## Change History

File Name	MEITRACK Magnetic Card Reader User Guide		
Project	T633L	Creation Date	2019-04-25
		Update Date	
Subproject	Accessory User Guide	Total Pages	6
Version	V1.0	Confidential	External Documentation

## Contents

1 Copyright and Disclaimer .....	- 4 -
2 Specifications .....	- 4 -
3 Appearance .....	- 5 -
4 Functions .....	- 5 -
5 Installation and guidance .....	- 5 -
5.1 Magnetic Reader Installation on T633L .....	- 5 -
5.2 Configuration .....	- 6 -
5.3 Scan the card .....	- 6 -

## 1 Copyright and Disclaimer

Copyright © 2019 MEITRACK. All rights reserved.

 and  are trademarks that belong to Meitrack Group.

The user manual may be changed without notice.

Without prior written consent of Meitrack Group, this user manual, or any part thereof, may not be reproduced for any purpose whatsoever, or transmitted in any form, either electronically or mechanically, including photocopying and recording.

Meitrack Group shall not be liable for direct, indirect, special, incidental, or consequential damages (including but not limited to economic losses, personal injuries, and loss of assets and property) caused by the use, inability, or illegality to use the product or documentation.

## 2 Specifications

Item	Specifications
Dimension	96.03mm(L)*33.63mm(W)*29.5mm(H)
Weight	95g
Power consumption	30 mA
Operating temperature	-20°C to 60°C
Operating humidity	30%~90%
Operating voltage	5 V
Electronic Endurance	100000 times of scanning
Read Speed	10 ~ 250mm/s
Read Error	< 0.5%
Standard	ISO7810, ISO7811, ISO7812, ISO15457
Decoding Mode	F2F(FM)
Transmission Protocol	RS232, baudrate-9600
Output Track	1/2/3/12/23/123
Card thickness	0.2-0.9mm
LED Indicators	1 green indicator, 1 red indicator

### 3 Appearance



Magnetic Card Reader



Driver License(Capable of detecting cards as long as they reach the standard)

### 4 Functions

- Identify the driver license ID and grant permission to start the vehicle.
- After customization, Magnetic Card Reader is capable of reading the membership card, identity card, entrance card, SIN card(and so on) as long as they reach the standard.

### 5 Installation and guidance

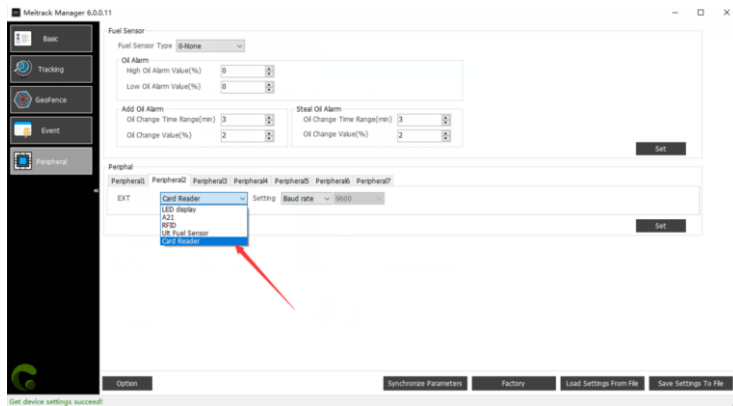
#### 5.1 Magnetic Reader Installation on T633L

Connect the Magnetic Reader to T633L on "RS232-2" via 4 X 2 PIN



## 5.2 Configuration

Connect the tracker(T633L) to PC via USB, open Meitrack Manager, select “Peripheral”, “peripheral 2”, select “Card Reader”, click “set”. The configuration is done.



## 5.3 Scan the card

Users could scan the card after the configuration as below:



It means the reader has succeeded in detecting the card if a “Di” sound is heard. Then the card ID is uploaded to the platform.

**If you have any questions, do not hesitate to email us at [info@meitrack.com](mailto:info@meitrack.com).**